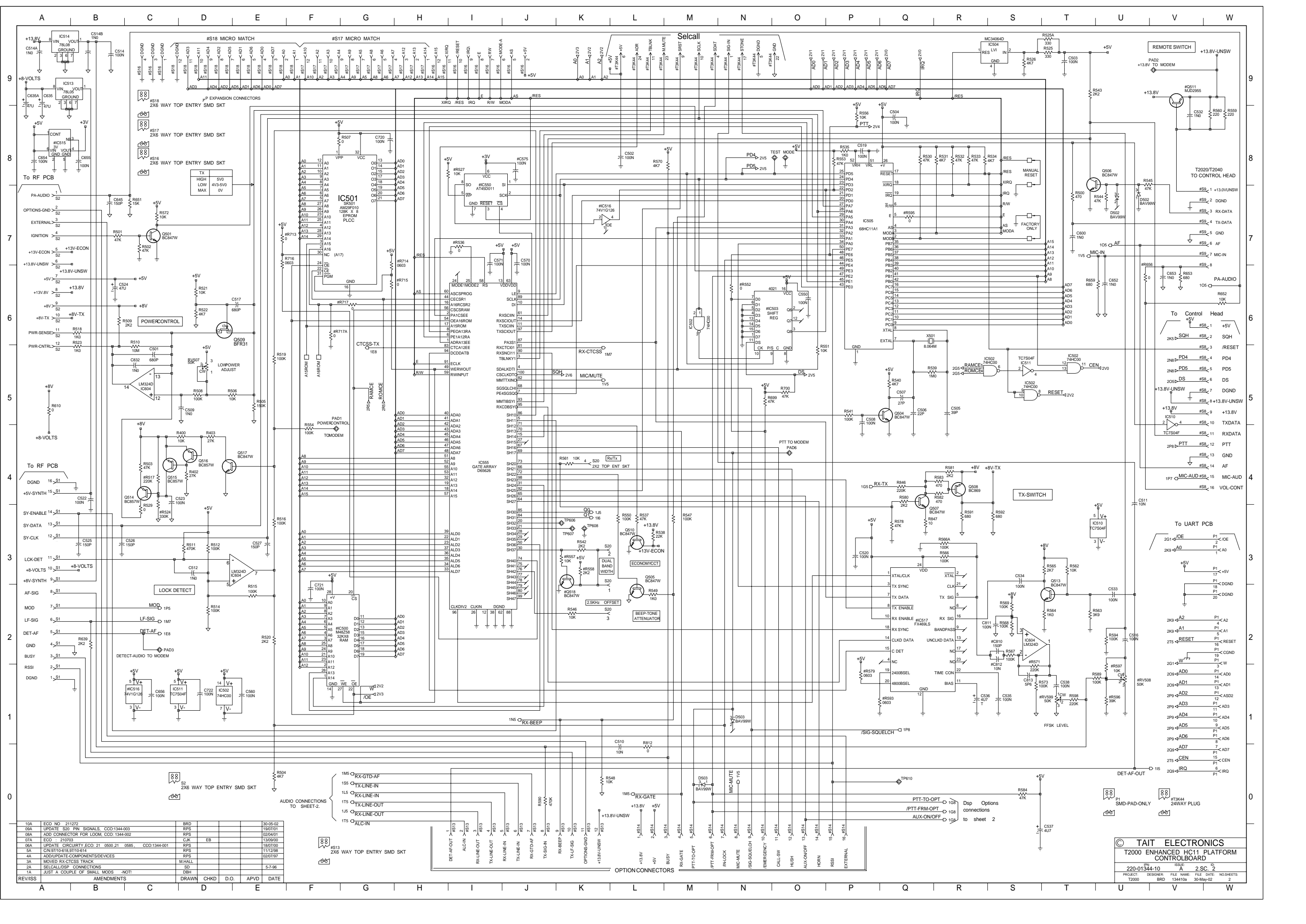


#OPTIONS	#C611	#C831	#R902	#C906	#IC801
T2050	012	100p	-	0ohm	LM324
T203X	014	-	-	-	-
T2020	015	100p	-	0ohm	LM324
T2040	016	-	-	-	-
T2060	017	47p	56p	4u7	LM324

#OPTION	#IC500	#R713	#RV508	#R596	#R597	#C810	#C812	#R571	#RV599	#C704	#C703	#R700	#R552	#IC503	#S8	#S9	#R656	#Q511	#C706	#C631	#IC517	#R717	#R717A	#P1	#S13	#S14	#S16	#S17	#S18	#T3K44	#T3K45	#012	#014	#015	#016	#017	#018	#019	#F01	#F02	#F03							
T2050	012	M48Z58MH1TR	-	-	39KS	10KJ	-	10NJ	220KJ	50KVAR13	4U7F16Z3528	-	-	-	-	-	SK8MSMD	0J	MJD2955	-	100NT	-	-	2000UJART	-	-	-	-	-	3K44OPT	3000OPT	680J	-	-	-	-	-	-	-	-	-	-	-	-	-	-	-	
T203X	014	M48Z58	-	-	39KS	10KJ	-	10NJ	220KJ	50KVAR13	4U7F16Z3528	-	-	-	-	-	SK8MSMD	0J	MJD2955	-	100NT	-	-	2000UJART	-	-	-	-	3K44OPT	3000OPT	-	-	-	-	-	-	-	-	-	-	-	-	-	-	-	-	-	-
T2020	015	M48Z58	-	-	39KS	10KJ	-	10NJ	220KJ	50KVAR13	4U7F16Z3528	-	-	-	-	-	SK8MSMD	0J	MJD2955	-	100NT	-	-	2000UJART	-	-	-	-	3K44OPT	3000OPT	-	-	-	-	-	-	-	-	-	-	-	-	-	-	-	-	-	-
T2040	016	M48Z58	-	-	39KS	10KJ	-	10NJ	220KJ	50KVAR13	4U7F16Z3528	-	-	-	-	-	SK8MSMD	0J	MJD2955	-	100NT	-	-	2000UJART	-	-	-	-	3K44OPT	3000OPT	-	-	-	-	-	-	-	-	-	-	-	-	-	-	-	-	-	-
T2060	017	M48Z58	-	-	39KS	10KJ	-	10NJ	220KJ	50KVAR13	4U7F16Z3528	-	-	-	-	-	SK8MSMD	0J	MJD2955	-	100NT	-	-	2000UJART	-	-	-	-	3K44OPT	3000OPT	-	-	-	-	-	-	-	-	-	-	-	-	-	-	-	-	-	
T203XD	019	M48Z58	-	-	39KS	10KJ	-	10NJ	220KJ	50KVAR13	4U7F16Z3528	-	-	-	-	-	SK8MSMD	0J	MJD2955	-	100NT	-	-	2000UJART	-	-	-	-	3K44OPT	3000OPT	-	-	-	-	-	-	-	-	-	-	-	-	-	-	-	-	-	
T203X	F01	M48Z58	-	-	39KS	10KJ	-	10NJ	220KJ	50KVAR13	4U7F16Z3528	-	-	-	-	-	SK8MSMD	0J	MJD2955	-	100NT	-	-	2000UJART	-	-	-	-	3K44OPT	3000OPT	-	-	-	-	-	-	-	-	-	-	-	-	-	-	-	-		
T2040	F02	M48Z58	-	-	39KS	10KJ	-	10NJ	220KJ	50KVAR13	4U7F16Z3528	-	-	-	-	-	SK8MSMD	0J	MJD2955	-	100NT	-	-	2000UJART	-	-	-	-	3K44OPT	3000OPT	-	-	-	-	-	-	-	-	-	-	-	-	-	-	-			
T2050	F03	M48Z58MH1TR	-	-	39KS	10KJ	-	10NJ	220KJ	50KVAR13	4U7F16Z3528	-	-	-	-	-	SK8MSMD	0J	MJD2955	-	100NT	-	-	2000UJART	-	-	-	-	3K44OPT	3000OPT	-	-	-	-	-	-	-	-	-	-	-	-	-	-	-			



REV/ISS	AMENDMENTS	DRAWN	CHKD	D.O.	APVD	DATE
10A	ECO NO. 211722		BRD			20-05-02
09A	UPDATE S20 PIN SIGNALS. CCO-1344-003		RPS			19/07/01
08A	ADD CONNECTOR FOR LOOM. CCO-1344-002		RPS			02/04/01
07A	ECO : 210703		CJK	EB		13/09/00
06A	UPDATE CIRCUITRY ECO: 21 0500, 21 0585, CCO-1344-001		RPS			18/07/00
5A	CONVERT TO 1418.9V TO 1414		RPS			11/12/98
4A	ADD/UPDATE COMPONENTS/DEVICES		RPS			02/07/97
3A	MOVED RX-CTCSS TRACK		M HALL			
2A	SELCALLS CONNECTIONS		SD			5-7-96
1A	JUST A COUPLE OF SMALL MODS - NOT!		DBH			

TAIT ELECTRONICS
T2000 ENHANCED HC11 PLATFORM CONTROL BOARD

ISSUE ID: 2 SC. 2
 PROJECT: T2000 FILE NAME: 134410a FILE DATE: 30-May-02
 NO SHEETS: 2

A	B	C	D	E	F	G	H	I	J	K	L	M	N	O	P	Q	R	S	T	U	V	W
---	---	---	---	---	---	---	---	---	---	---	---	---	---	---	---	---	---	---	---	---	---	---

15

14

13

12

11

10

9

8

7

6

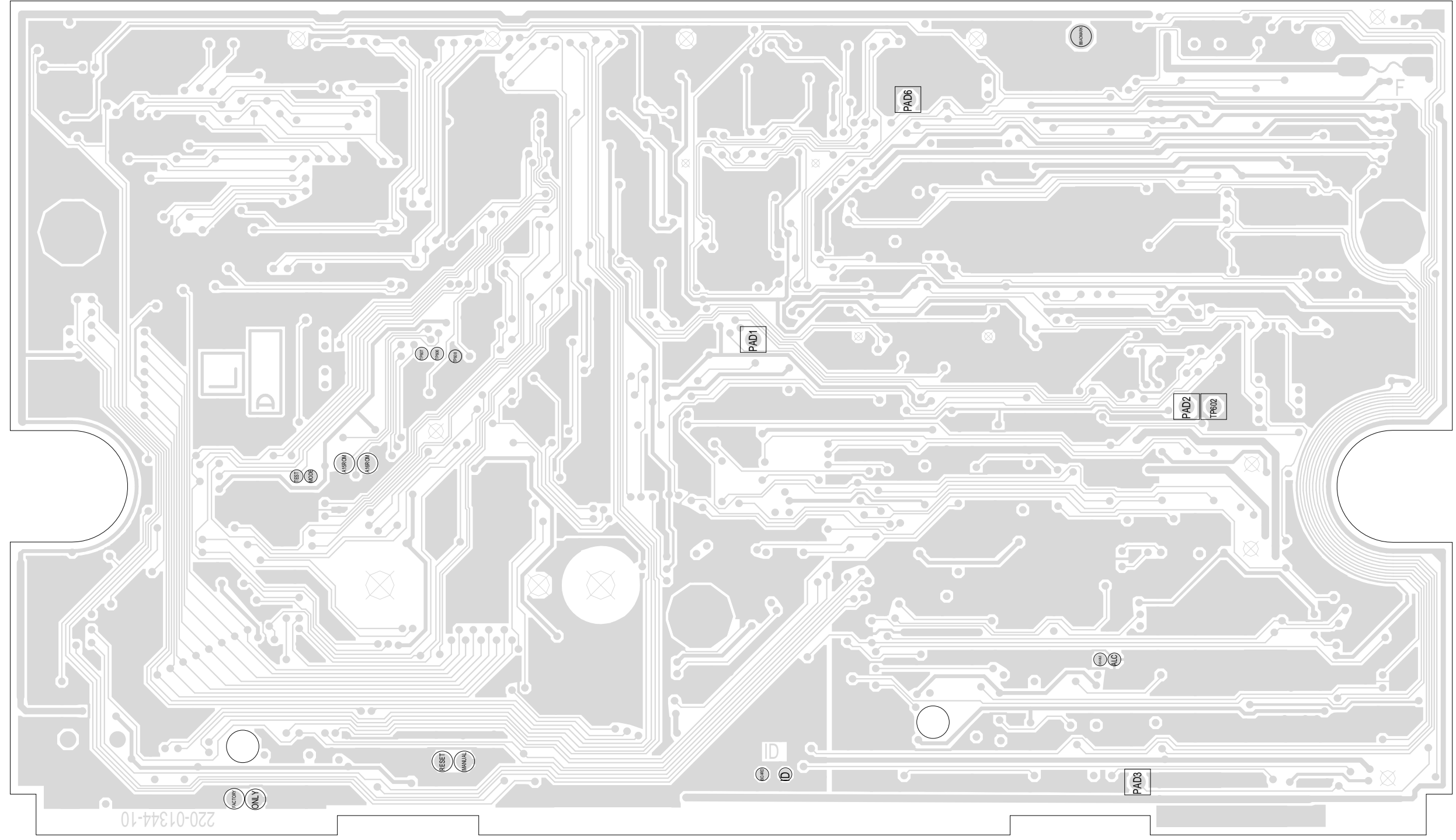
5

4

3

2

1



220-01344-10

TAIT ELECTRONICS	IPN:	ISS:	ID:	DATE:
	220-01344-10	A	2.BA	30 May 2002
T2K ENHANCED PCB LAYOUT - BOTTOM SIDE				

Scale:2.3:1 ; Rotation: 90 degrees